

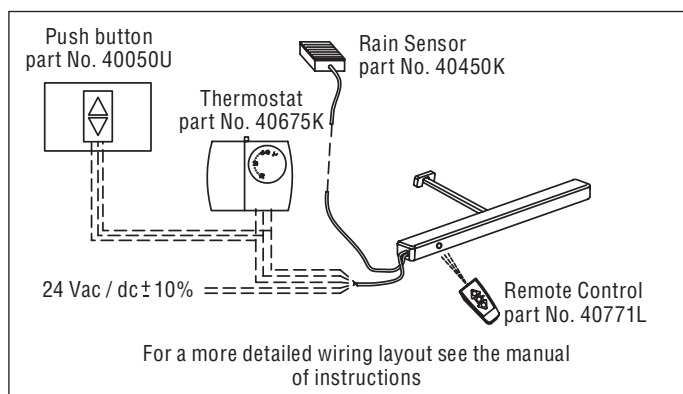
VEGA

Chain Actuator – Force in push action 250 N – Maximum stroke 300 mm



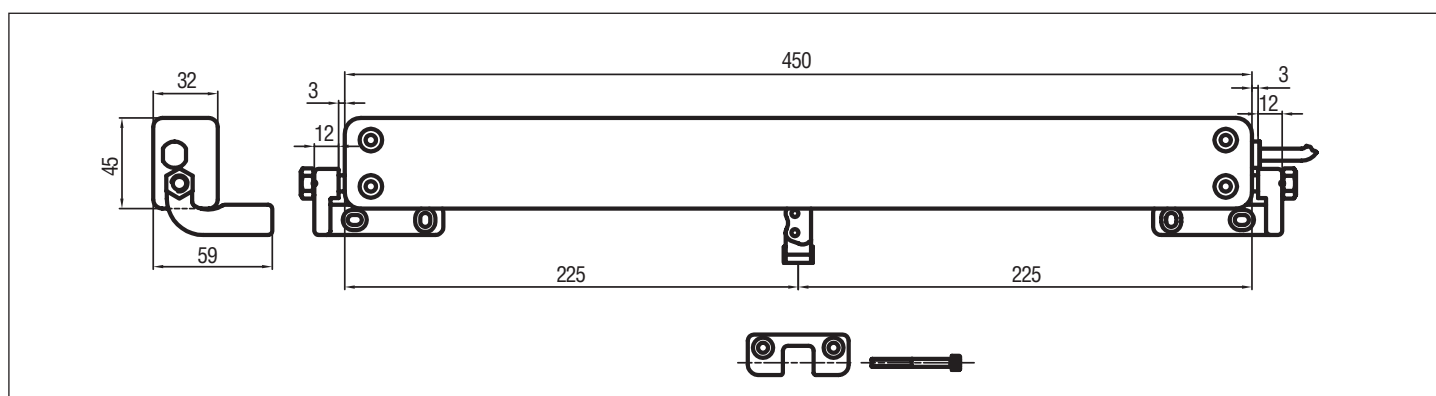
- Highest performance in minimum size: the die-cast aluminium casing has a very small section (45 x 32 mm) and can be easily built-in into the frame of curtain walls.
- New concept double link chain completely in stainless steel.
- Chain exit in central position.
- Quick and easy installation: the manual closing position regulation is not required, avoiding possible mistake. The stop in closing position is regulated by an electronic limit switch.
- If installed on PVC windows, the profile has to be reinforced.
- Electronic stop in the intermediate positions in case of overload.
- Supplied with 1,5 m cable and pivoting brackets.
- The installation without brackets is possible for windows with pivoting hinges only if the vent height is at least 900 mm.

	VEGA AC	VEGA DC	VEGA IR
VOLTAGE SUPPLY	100 Vac - 240 Vac	24 Vdc \pm 10%	24 Vac/dc \pm 10%
ELECTRIC CONNECTION	3 wires + earth	2 wires	5 wires + 3 for the rain sensor
OPERATION		by polarity inversion	
STROKE	300 mm	300 mm	300 mm
FORCE (push and pull action)	250 N	250 N	250 N
SPEED	~ 9 mm/s	~ 9 mm/s	~ 9 mm/s
CURRENT ABSORPTION (with max load)	0,3 A - 0,15 A	0,7 A	0,7 A
PARALLEL CONNECTION	YES	YES	YES
LIMIT STOP	Electronic	Electronic	Electronic
SAFETY STOP	Electronic	Electronic	Electronic
TIME RATING	50%	50%	50%
PROTECTION CLASS	IP 30	IP 30	IP 30
			Integrated IR RECEIVER Direct connection at the rain sensor (optional)



VEGA IR

The VEGA IR model is controlled by an infra-red transmitter and is predisposed for the direct connection at a rain sensor or at a thermostat without any control panel (the accessories must be ordered separately)



Actuator dim.

SPECIFICATION PROSPECTS

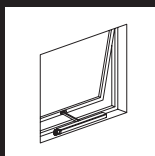
Electric chain actuator Ultraflex Control Systems named Vega with double link chain completely in stainless steel. Voltage supply: from 100 to 240 Vac or 24 Vdc - Electronic limit stop; electronic stop in the intermediate positions in case of overload.

Casing in painted die-cast aluminium with very small section (45x32 mm).

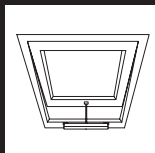
Pivoting brackets included.

The 100-240 Vac version and the 24 Vdc version are conform to 89/336 EMC directives as modified per 93/68 CE, the 100-240 Vac version is conform to 73/23 LVD directives.

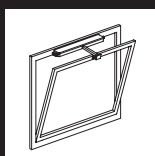
⚠ The instructions for a safe installation are included in the section “SECURITY WARNINGS”



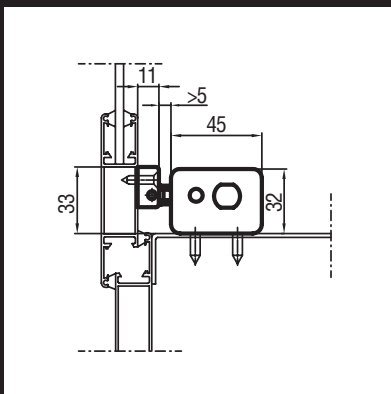
Top hinged windows



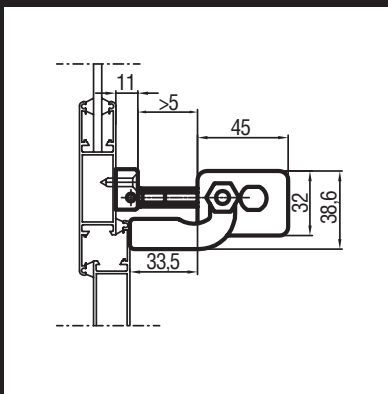
Top hinged roof windows



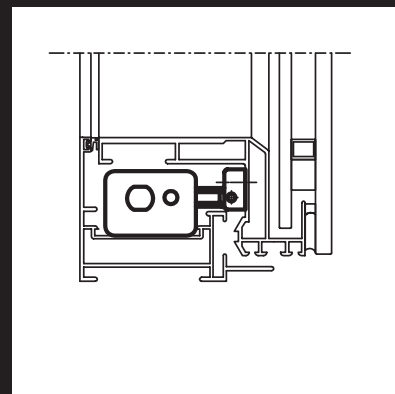
Bottom hinged windows



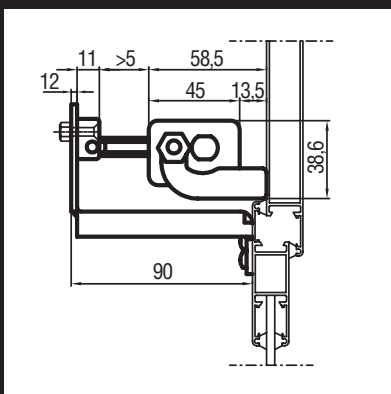
On windows with windowsill



On windows without windowsill with pivoting brackets kit included

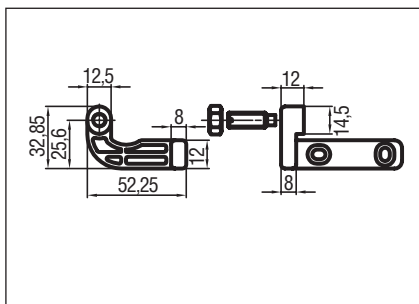


Inside a curtain wall frame

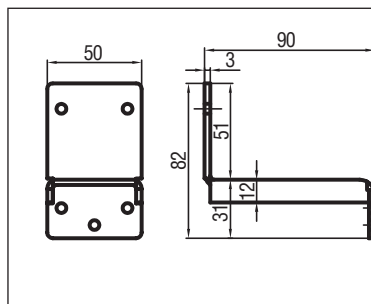


On the frame with pivoting brackets kit and bracket for bottom hinged windows part No. 40858U

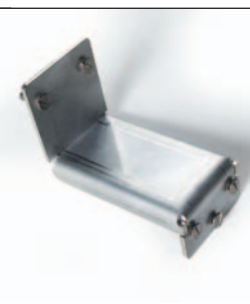
Accessories



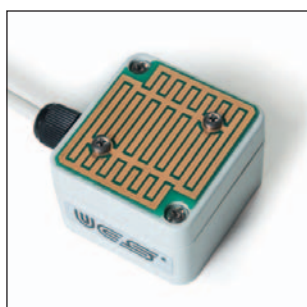
Pivoting brackets kit (included)



Bracket for bottom hinged windows part No. 40858U



Remote control RC for VEGA IR part No. 40771L with wall support



Rain sensor part No. 40450K



Thermostat TH part No. 40675K



Self-fed push button for VEGA IR part No. 40355M